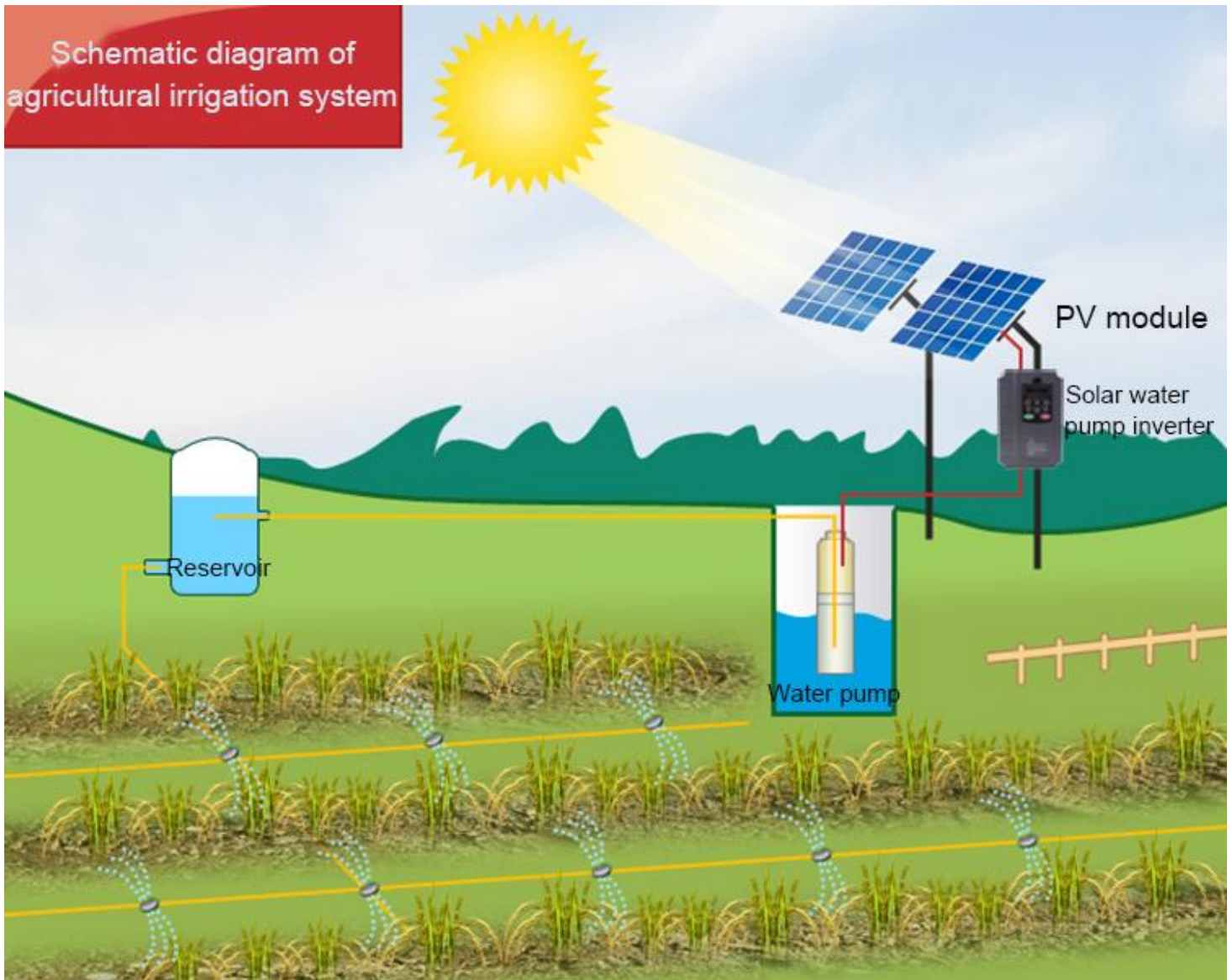


New green energy solar powered agricultural water pumping system



Equipment & Details:

Item	Description	Quantity
Solar Pump	Motor Power	22KW
	Input voltage	380VAC 3Phase
	Outlet Diameter Inch	3"
	Flow	0 - 27 m ³ /h
	Head	79 - 374 m
Solar Pumping Drive	Inverter Power	30KW
	Output voltage	380V 3Phase
	Maximum input	800VDC
	Recommend input	420 - 720VDC
	Output frequency	50/60HZ
Solar Panel	Type	Polycrystalline
	Power & Voltage	275W/31.54V
	Dimension	1956*992*40mm
Combiner Box	Number Of Inputs	6
	(Positive & Negative)	
Cable	Core Cable	3*25mm ²
	Solar Cable Red	2*4 Sq.mm

Product Description:

1, Solar Panels

- 25 years Warranty
- Highest conversion efficiency of 17%
- Anti-reflective and anti-soiling surface power, loss from dirt and dust
- Excellent mechanical load resistance
- Excellent mechanical load resistance
- PID Resistant, High salt and ammonia resistance



2, Solar Inverter

- 18 months Warranty
- Self-adaptive maximum power point tracking technology with up to 99% efficiency
- Smart multi-pump control card optional for more efficient solar energy utilization
- Automatic regulation of pump flow
- Self-adaptation to the drive used in the installation



3, Pump

- 12 months Warranty
- Centrifugal & Multistage Pump
- Using stainless steel for casing, shaft, spline,
- high-strength and abrasion-resistant modified composite PC material for impeller and diffuser
- adopting brand-new "Folding impeller" structure, extends service life, and saves power



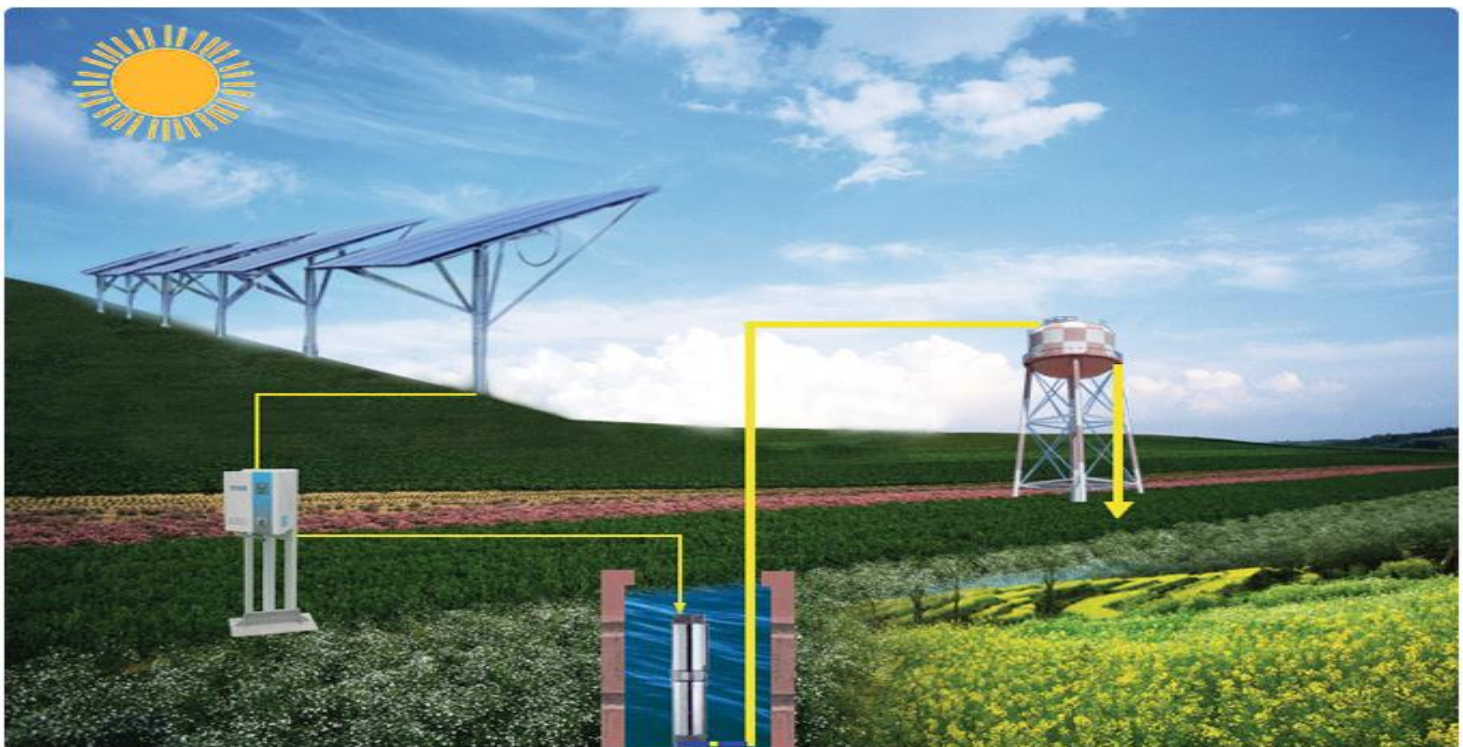
4, PV Combiner Box

- Greatly simplifies input and output wiring
- Available in 4 to 16 circuit configurations
- Reliable bus-work for particularly high current conductor combining
- Compact, rugged IP65 wall mount steel enclosure
- Integrated with smart anti-lighting modules
- Built-in DC string fuses



5, Solar Cable

- Conductor: Stranded tinned copper
- Insulation/Sheath: halogen free crosslinked polyolefin
- Nominal Cross-Section: 1.5/2.5/4.0/6.0/10.0mm²
- Rated Temperature: -40-+90°C
- Weathering Resistance: UV
- Burning Behavior (IEC60332-1, UL1581 VW-1) No of core: 1



Application:



Farm irrigation



Drinking water for livestock



Sewage treatment



Scenic spot fountain



Drinking water for people



Desert treatment