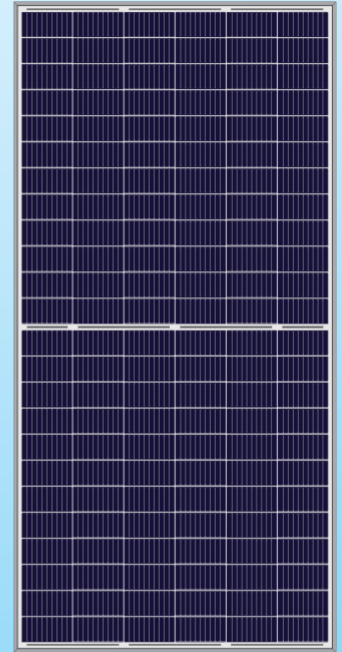


poly 158 72X9

# MSP360~375W

## Half-Cell High Efficiency PV Module



HIGH EFF.

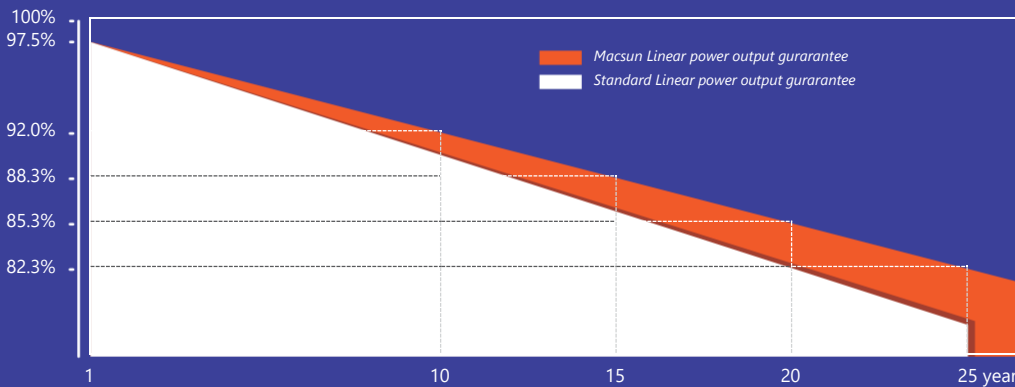


HALF CELL



### Quality Guarantee

12-year material & technology warranty  
25-year linear power output warranty



## 18.64%

Max Module Eff.

## 0~+5W

Positive Tolerance

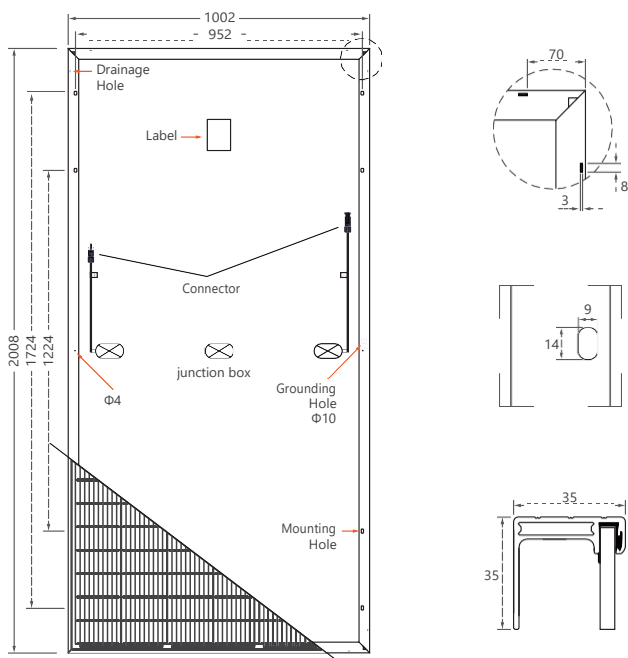
### Performance Advantage

- > More Busbars, the Less of Broken and cracking, As the Narrowed Cell Bus Bar Width, the Light Receiving Area and Power are Increased too.
- > Half-Cell technology and back passivation technology, excellent photoelectric conversion efficiency.
- > Excellent low-light power generation performance, even if it is half blocked, there is still 50% power output.
- > Series-parallel combined circuit design, higher output power than conventional PERC.





**Design**



**Mechanical Specification**

Cells Type	Poly 158.75×79.375mm
Weight	23kg
Dimension (L×W×T)	2008×1002×35mm
Cable	4.0mm <sup>2</sup> ; Portrait: N 400mm/P 300mm, Landscape: N 1400mm/P 1400mm
No.of Cells	144 (6×24)
Glass	3.2 mm High Transmission, Antireflection Coating
Junction box	IP68, 3 Bypass Diodes
Connector	QC4 or MC4 Compatible
Packing	31pcs/pallet, 310pcs/20GP, 726pcs/40HQ

**Operating Parameters**

Maximum system voltage	1000V/1500V DC
Operating Temperature	-40 ~ +85°C
Maximum series fuse rating	20A
Snow load, frontside	5400Pa
Wind load, backside	2400Pa
Nominal operating cell temperature	45°C±2°C
Application level	Class A

**Electrical Characteristics(STC)**

Module Type	MSP360W	MSP365W	MSP370W	MSP375W
Maximum Power (Pmax)	360W	365W	370W	375W
Open-circuit Voltage (Voc)	47.2V	47.4V	47.6V	47.8V
Maximum Power Voltage (Vmp)	38.4V	38.6V	38.8V	39.0V
Short-circuit Current (Isc)	9.78A	9.86A	9.93A	10.01A
Maximum Power Current (Imp)	9.38A	9.46A	9.54A	9.62A
Module Efficiency (%)	17.89%	18.14%	18.39%	18.64%

Power Tolerance	0~+5W
Temperature Coefficient of Isc	0.05%/°C
Temperature Coefficient of Voc	-0.31%/°C
Temperature Coefficient of Pmax	-0.38%/°C
Standard Test Environment	Irradiance 1000w/m <sup>2</sup> , Cell temperature 25°C, Spectrum AM1.5

**Electrical Characteristics(NOCT)**

Module Type	MSP360W	MSP365W	MSP370W	MSP375W
Maximum Power (Pmax)	273W	277W	281W	285W
Open-circuit Voltage (Voc)	44.4V	44.7V	44.9V	45.2V
Maximum Power Voltage (Vmp)	36.3V	36.5V	36.7V	36.9V
Short-circuit Current (Isc)	7.97A	8.05A	8.12A	8.19A
Maximum Power Current (Imp)	7.52A	7.59A	7.66A	7.73A

Standard Test Environment	Irradiance 800w/m <sup>2</sup> , Cell temperature 20°C, Spectrum AM1.5, Wind speed 1m/s
---------------------------	---

